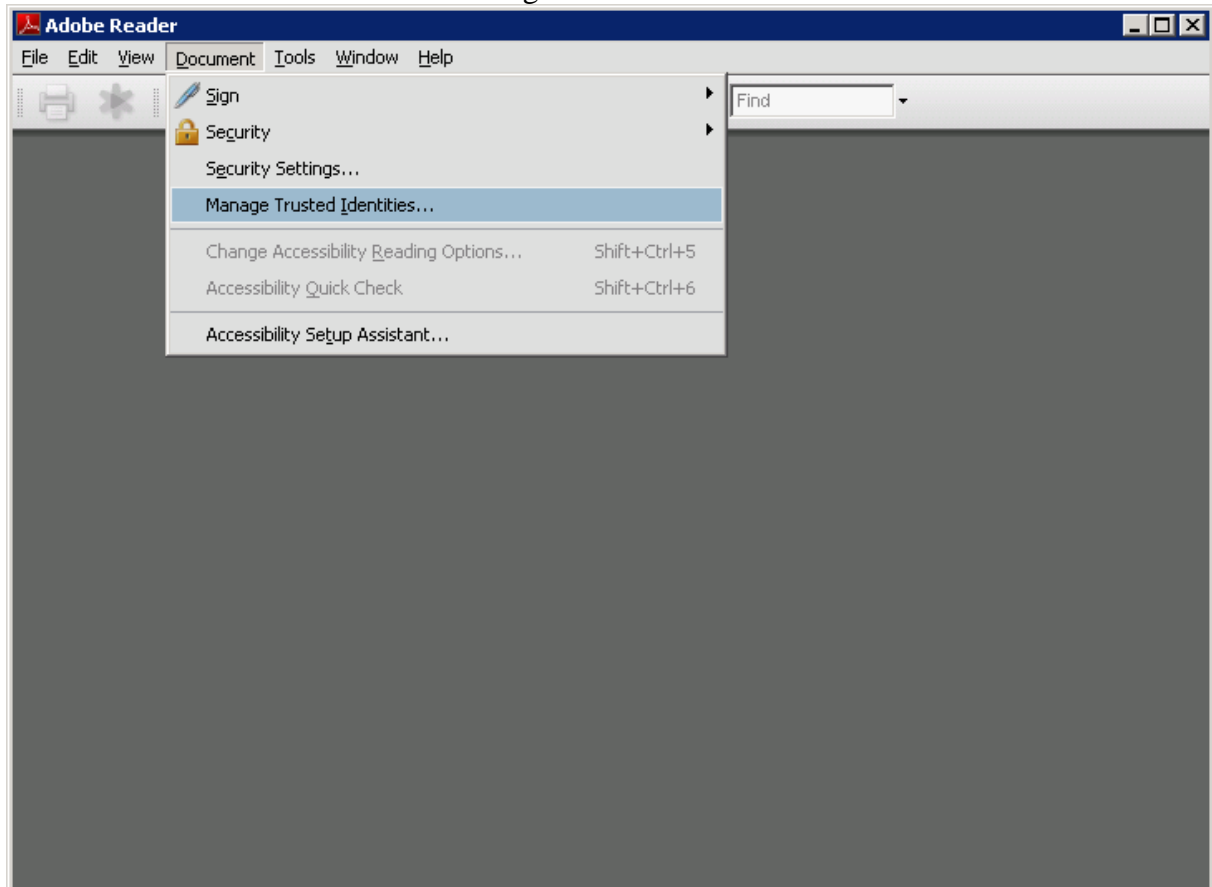
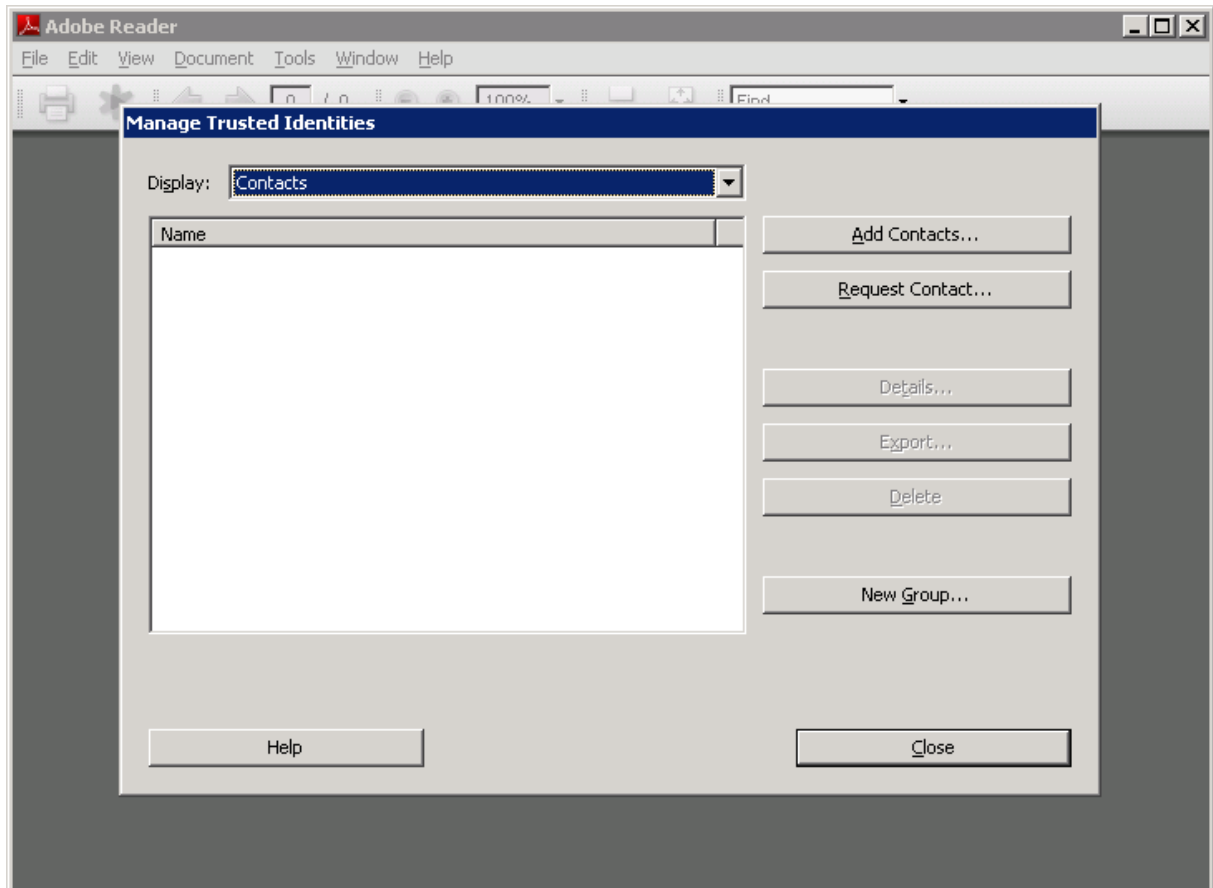


How to import certificate into Adobe Reader

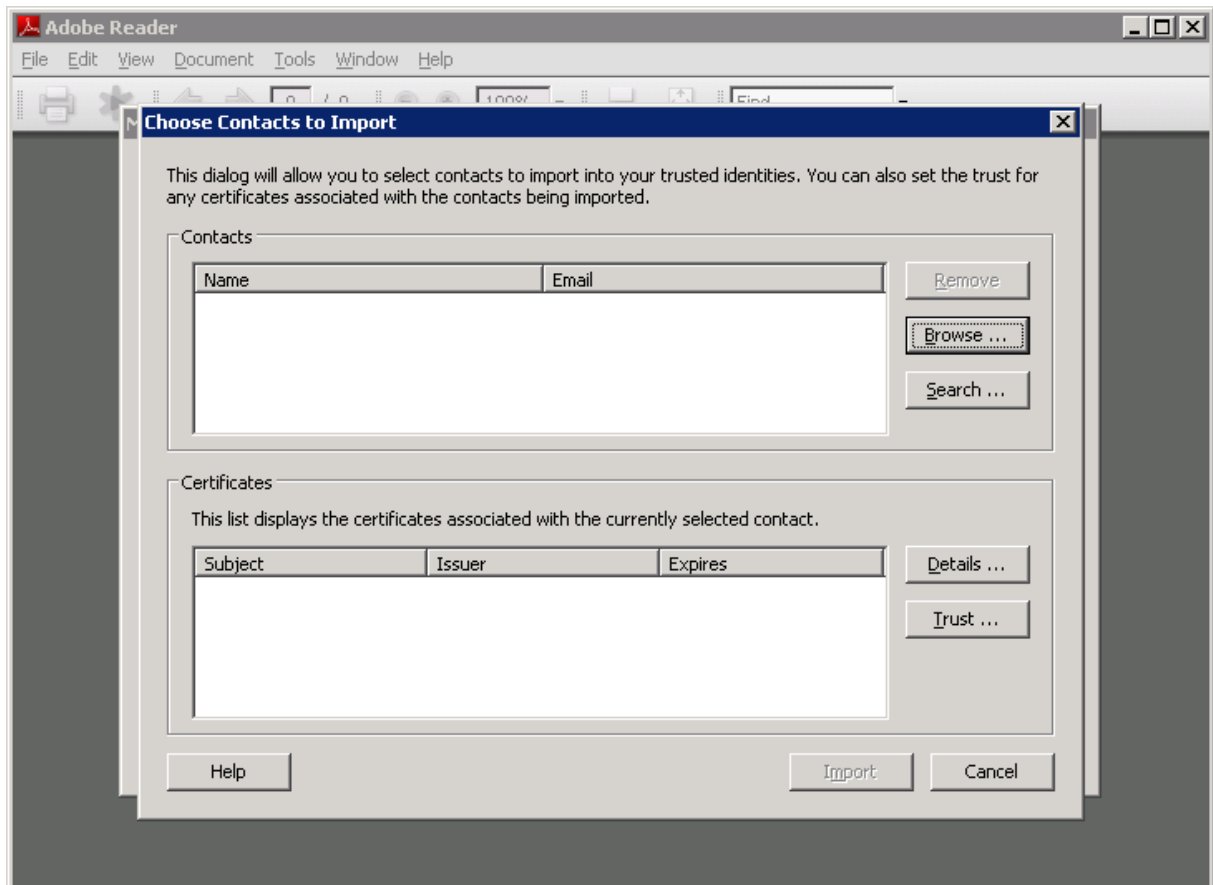
Select from menu “Document” – “Manage Trusted Identities”



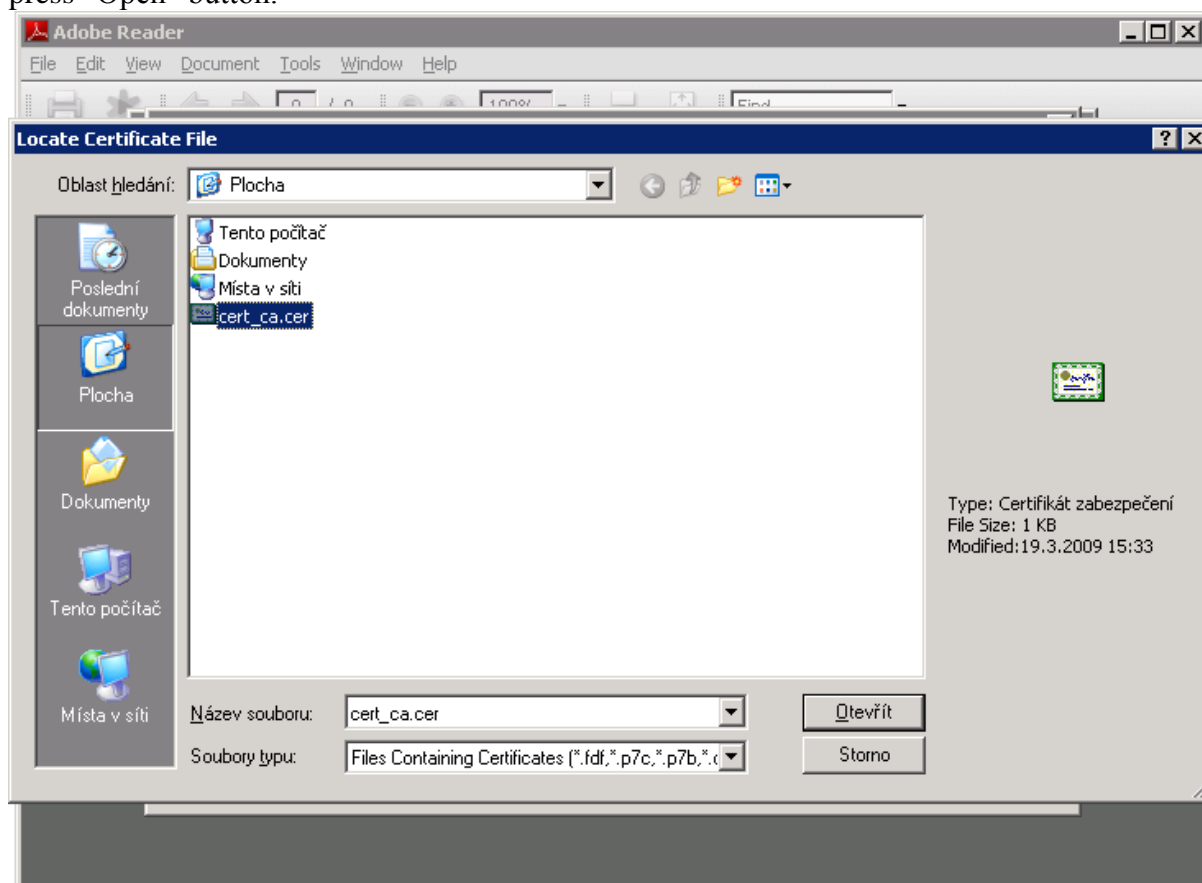
Press “Add Contacts...”



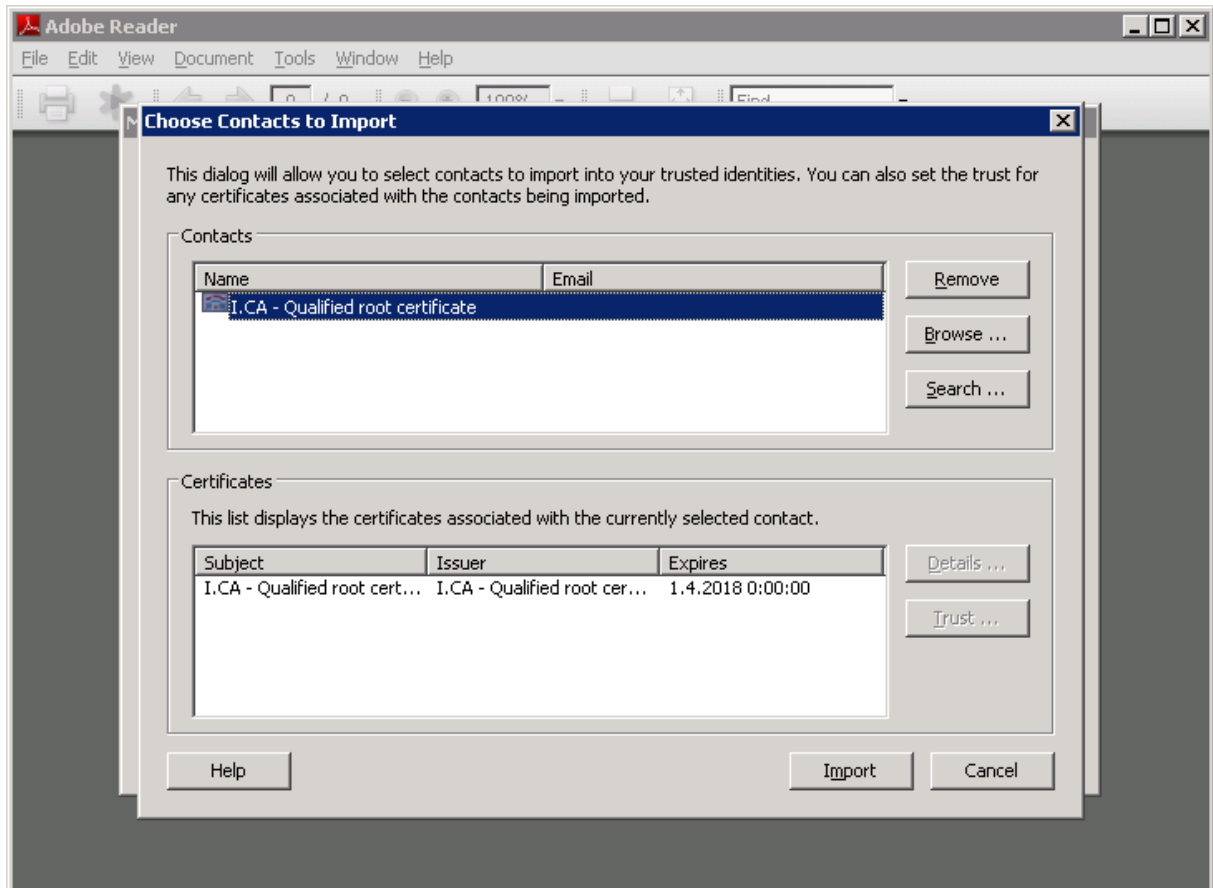
Press "Browse..."



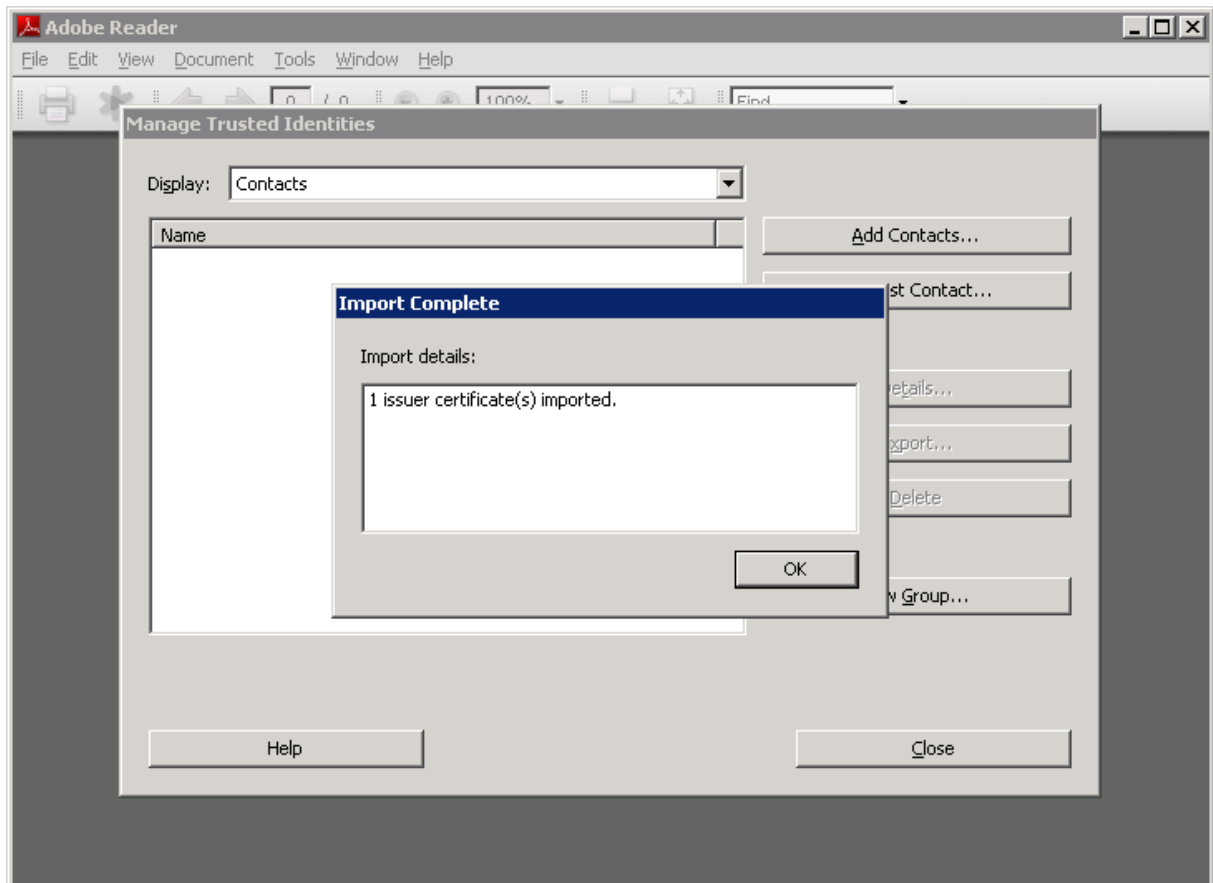
Browse to directory where the certificate is stored and select the file with certificate, then press “Open” button.



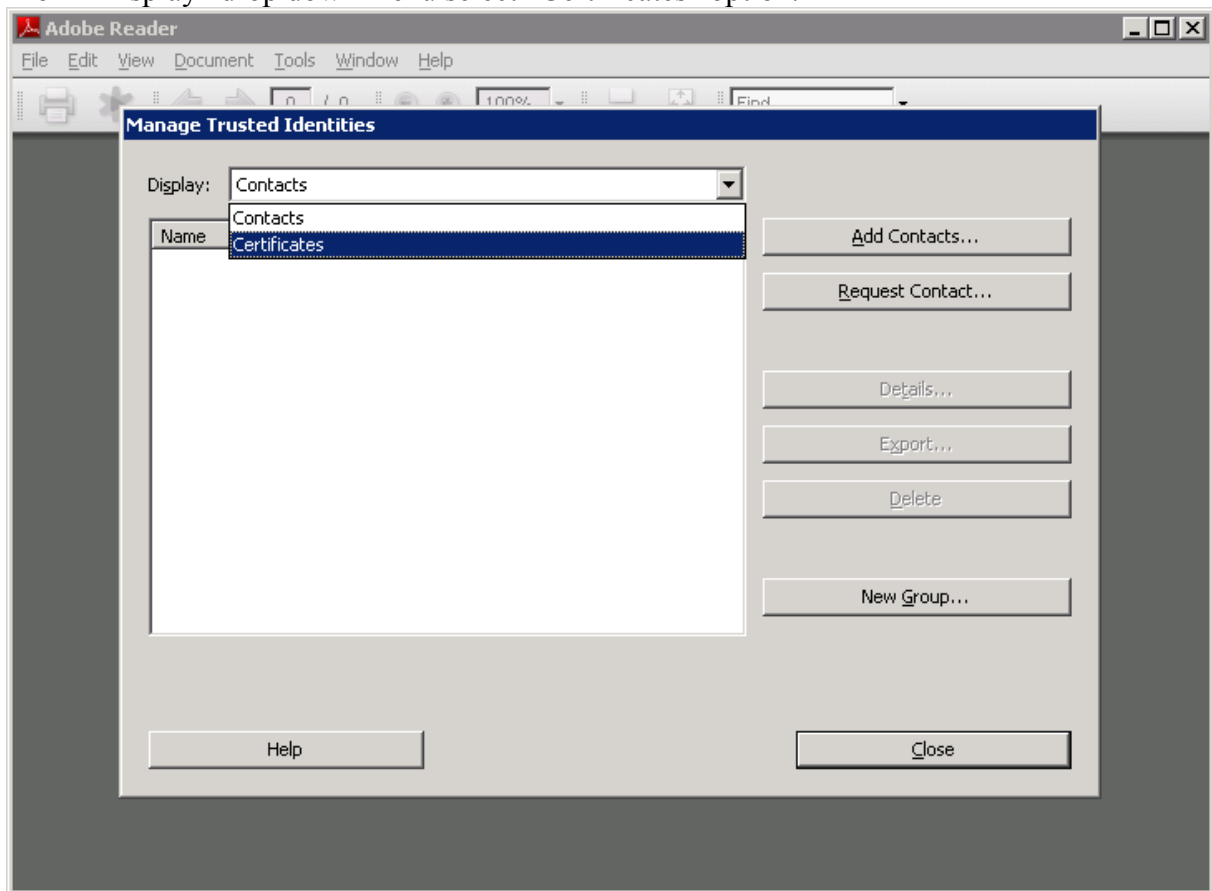
Select the desired certificate and press “Import” button



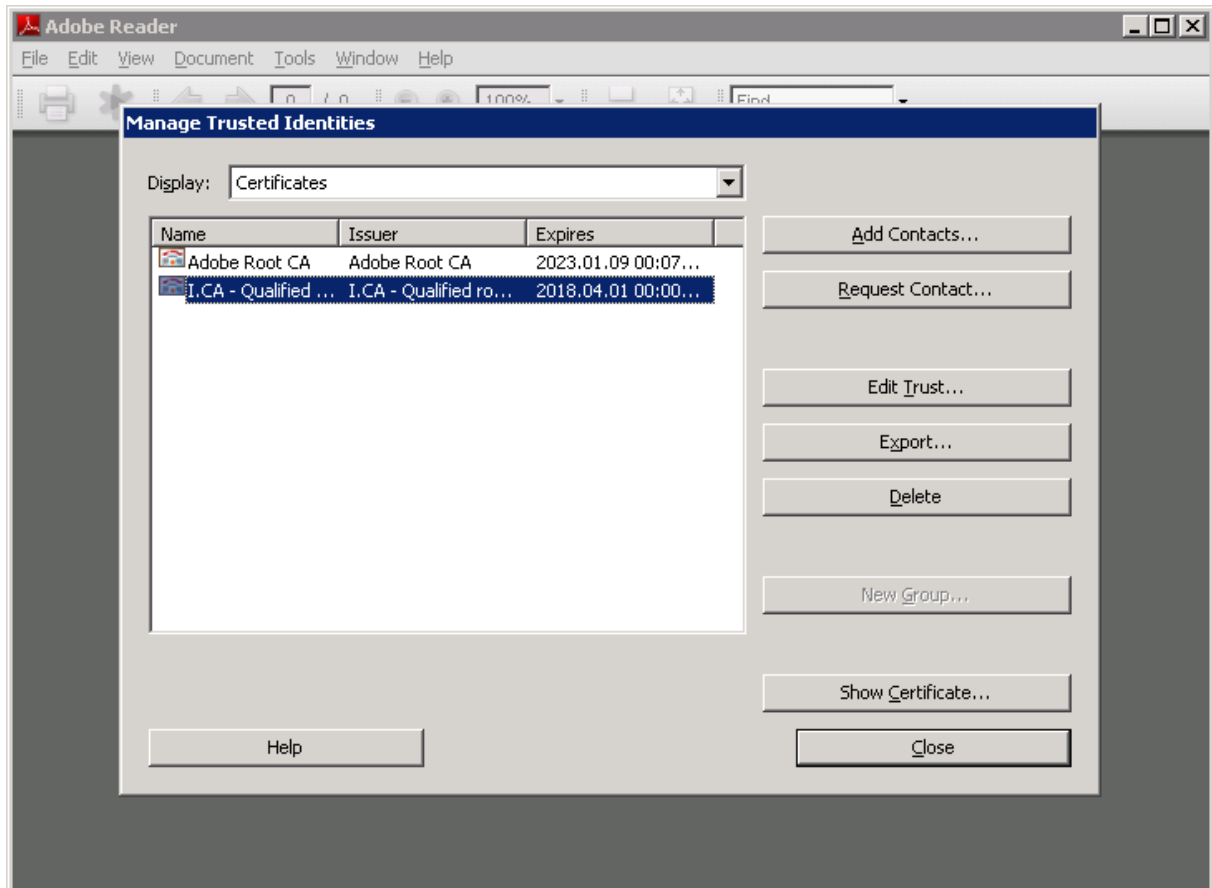
Press "OK"



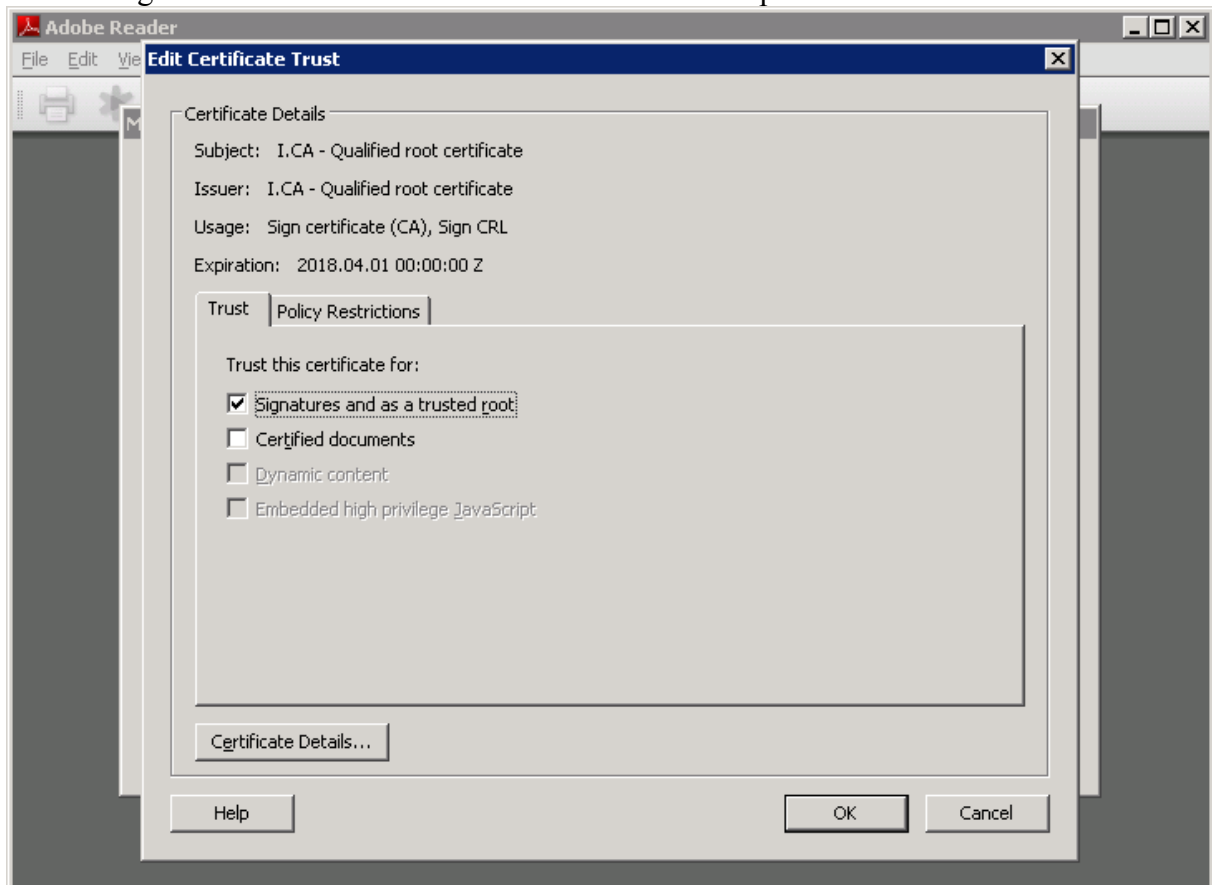
From “Display” drop down menu select “Certificates” option.



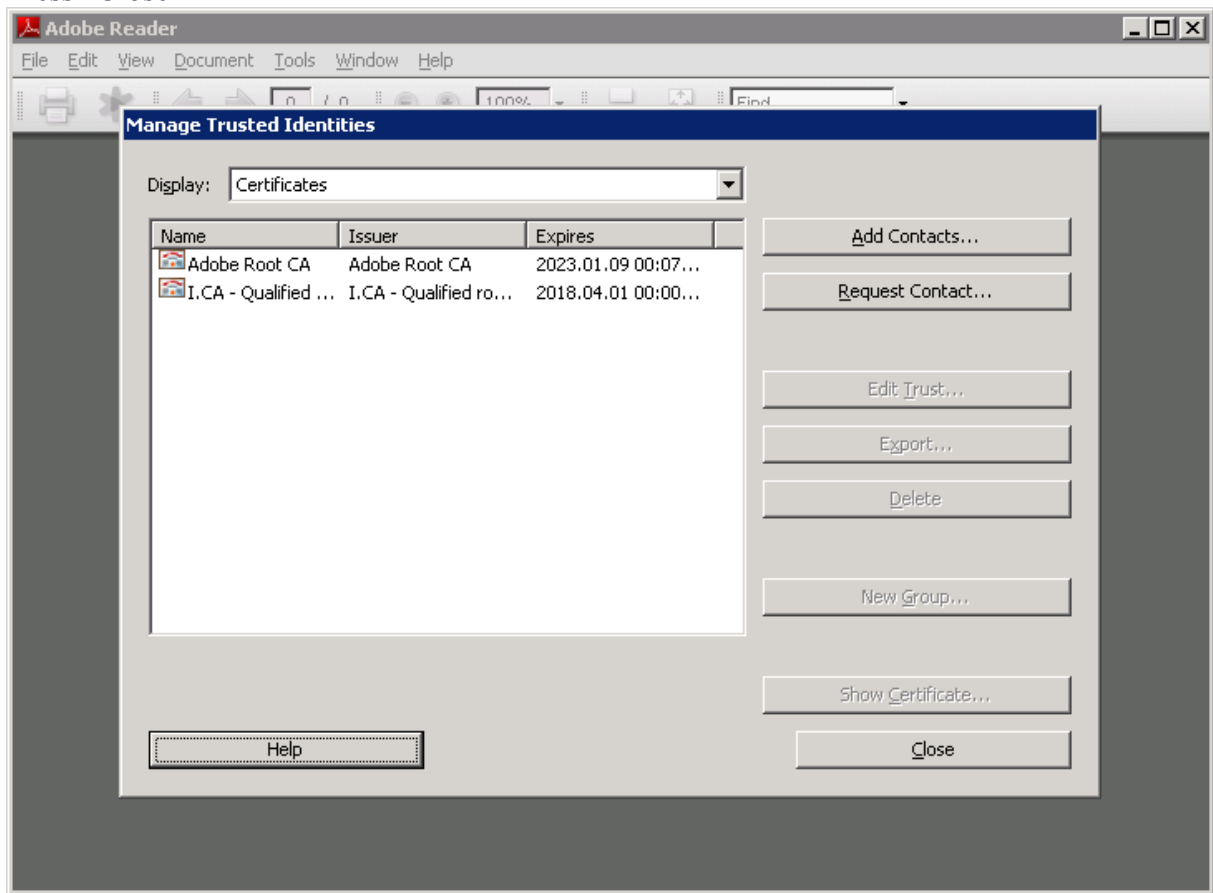
Choose the certificate you just imported and press “Edit Trust...” button.



Check “Signatures and as trusted root” checkbox and then press “OK” button.



Press “Close”



Congratulations you have successfully imported a certificate.